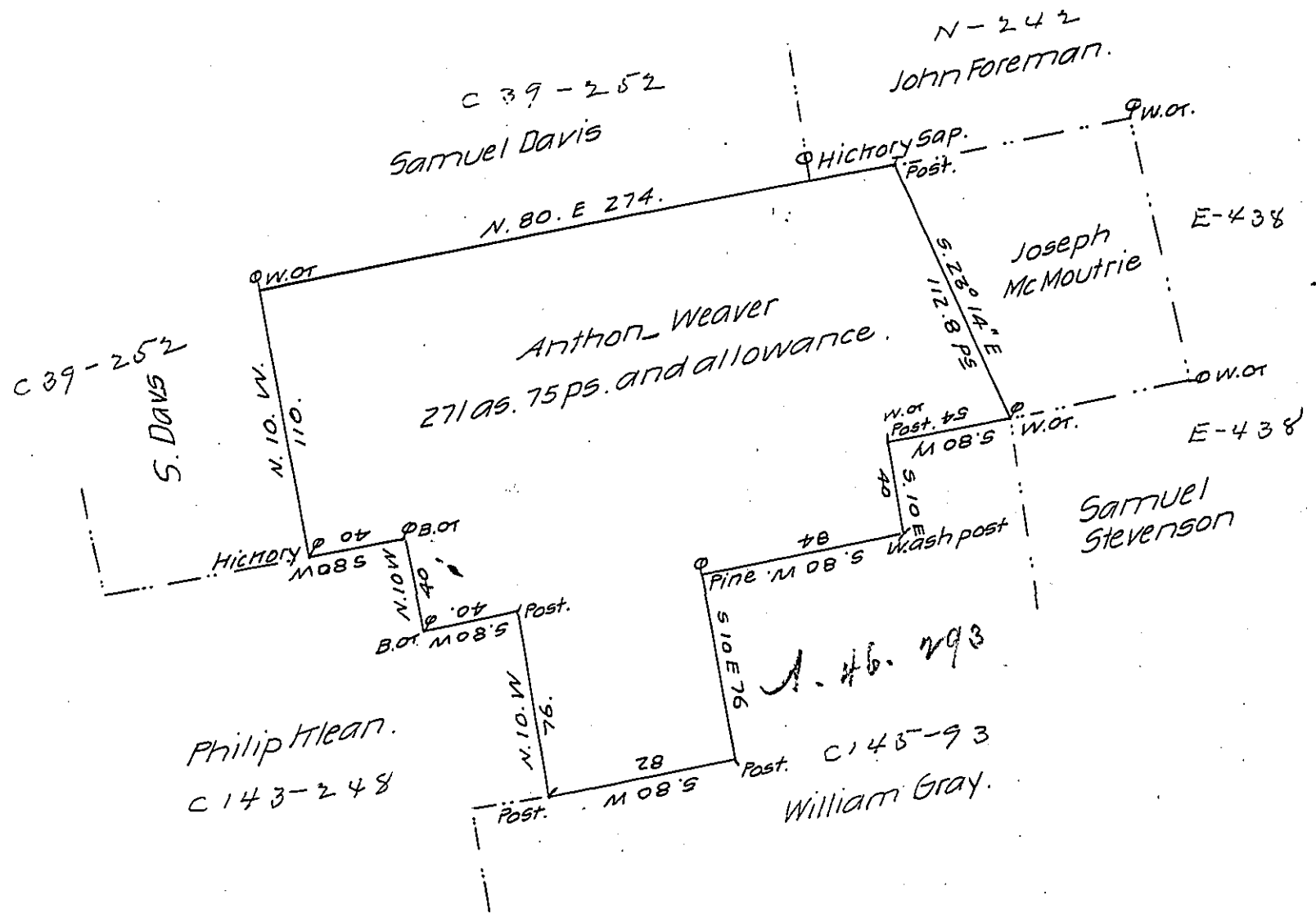


Sug. Loaf - 205  
Luzerne.



A draft of a tract of land situate in Sugar Loaf Township Luzerne County, containing two hundred and seventy one acres and seventy five perches with allowance of six pr. cent for roads. Including an improvement of Anthony Weaver said to have been made the first day of April 1809. Adjoining north land of Samuel Davis, East land of Joseph McMoutrie, South land of Wm. Gray, and West land of Philip Hlean. Surveyed the 17 day of July 1811. In pursuance of a warrant dated the 8th day of June 1811. by

Jonathan Stevens D.S.

Andrew Porter Esquire Surv! Gen!

IN TESTIMONY that the above is a copy of the original remaining on file in the Department of Internal Affairs of Pennsylvania, made conformably to an Act of Assembly approved the 16th day of February, 1833, I have hereunto set my Hand and caused the Seal of said Department to be affixed at Harrisburg, this first day of August 1907

*Henry Howells*  
Secretary of Internal Affairs.